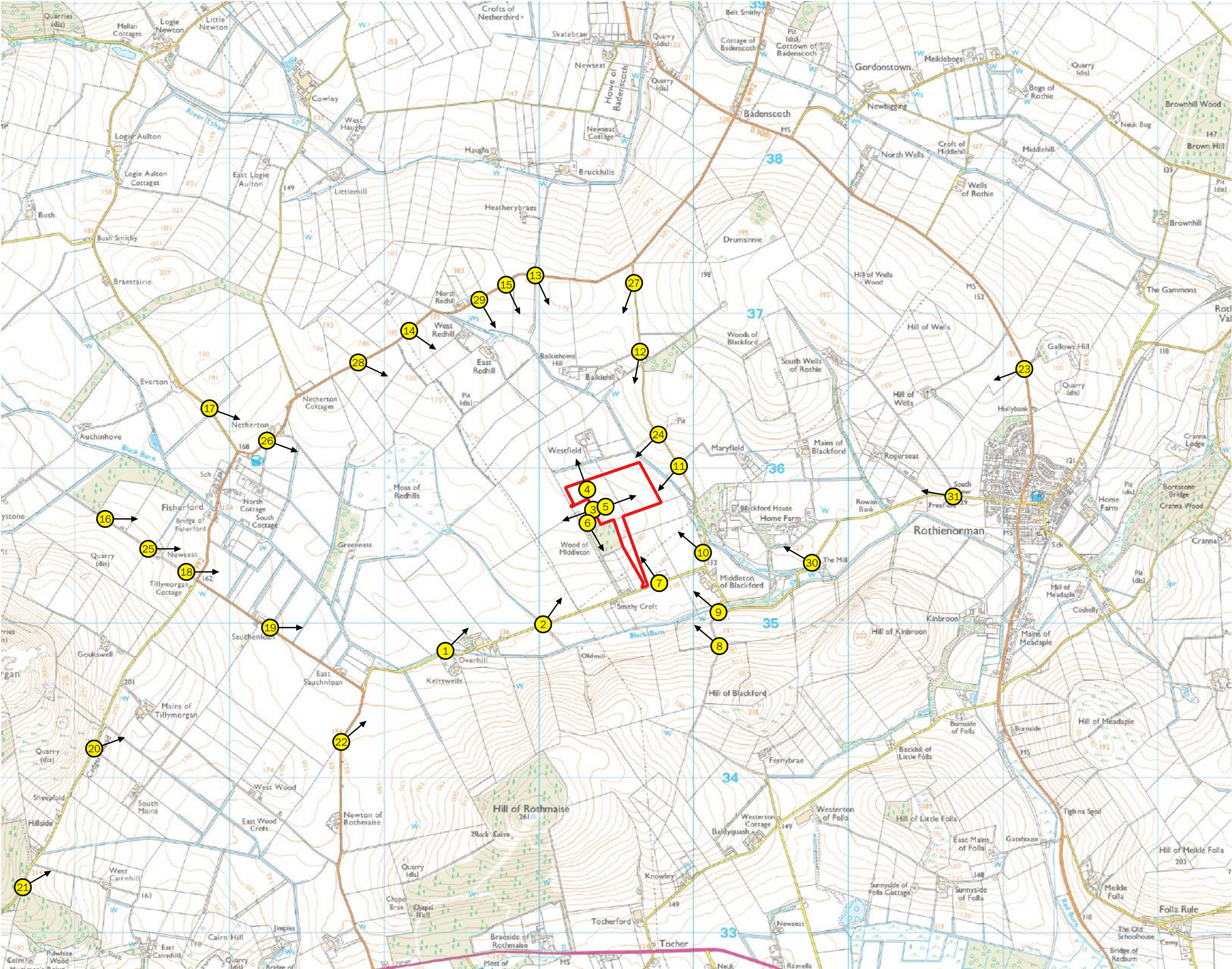


APPENDIX A.2

Figures 6 - 7

Figure 6: Photo Location Plan

Figure 7: Photographic Sheets



KEY

Site Boundary

Photo Location

Project: Blackford Energy Park
Client: Blackford Renewables Ltd
Date: March 2025
Scale: 1:25,000
Status: FINAL

0 0.25 0.5 0.75 1 1.25 1.5 km

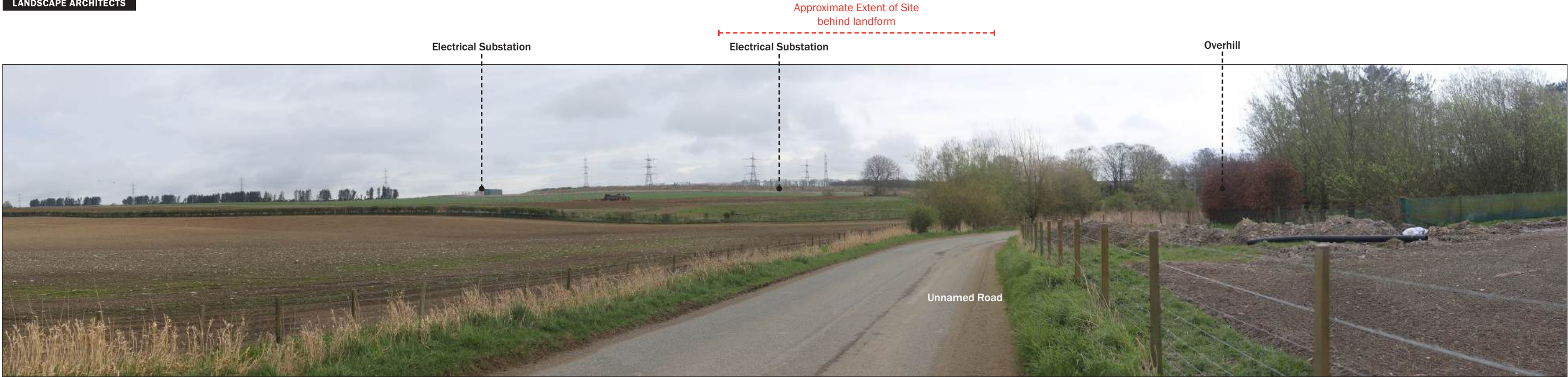


Photo Location 1: View looking north east towards the Site from unnamed road near Overhill and Keltswells.

Visualisation Type: Type 1
Date: 15.04.2025
Time: 10:55
Looking direction: north east
Projection: Planar
Camera: Canon 6D FFS
Focal length: 50mm
Approx. HFoV: 90 degrees
Enlargement Factor: 150% @ A3

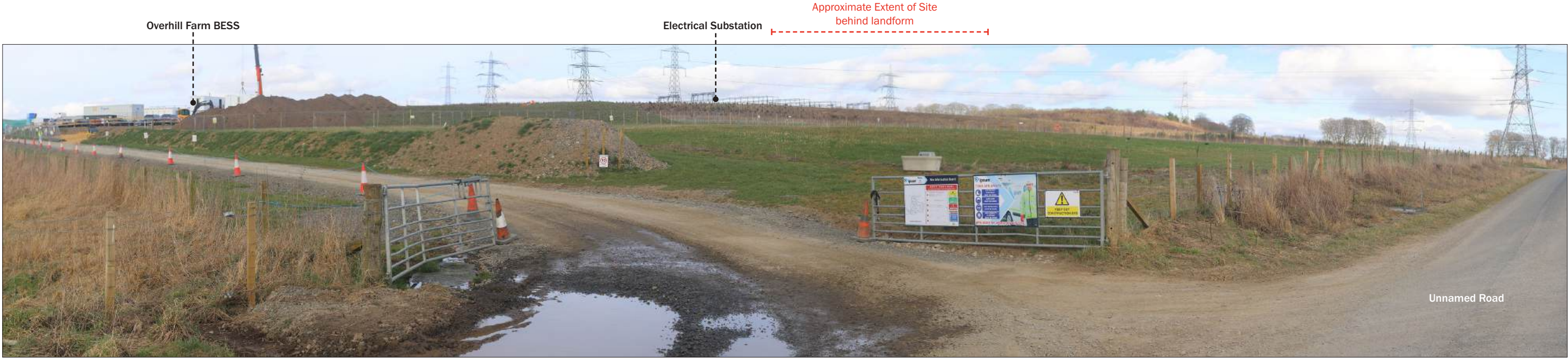


Photo Location 2: View looking north east towards the Site from unnamed road near Smithy Croft.

Visualisation Type: Type 1
Date: 07.03.2025
Time: 14:53
Looking direction: north east
Projection: Planar
Camera: Canon 6D FFS
Focal length: 50mm
Approx. HFoV: 90 degrees
Enlargement Factor: 150% @ A3

Electrical Substation



Photo Location 3: View looking west from within the Site.

Visualisation Type: Type 1
Date: 07.03.2025
Time: 14:37
Looking direction: west
Projection: Planar
Camera: Canon 6D FFS
Focal length: 50mm
Approx. HFoV: 90 degrees
Enlargement Factor: 150% @ A3

East Redhill

Westfield

Baikiehill



Photo Location 4: View looking north from within the Site.

Visualisation Type: Type 1
Date: 07.03.2025
Time: 14:39
Looking direction: north
Projection: Planar
Camera: Canon 6D FFS
Focal length: 50mm
Approx. HFoV: 90 degrees
Enlargement Factor: 150% @ A3



Photo Location 5: View looking east from within the Site.

Visualisation Type: Type 1
Date: 07.03.2025
Time: 14:38
Looking direction: east
Projection: Planar
Camera: Canon 6D FFS
Focal length: 50mm
Approx. HFoV: 90 degrees
Enlargement Factor: 150% @ A3



Photo Location 6: View looking south from within the Site.

Visualisation Type: Type 1
Date: 07.03.2025
Time: 14:41
Looking direction: south
Projection: Planar
Camera: Canon 6D FFS
Focal length: 50mm
Approx. HFoV: 90 degrees
Enlargement Factor: 150% @ A3

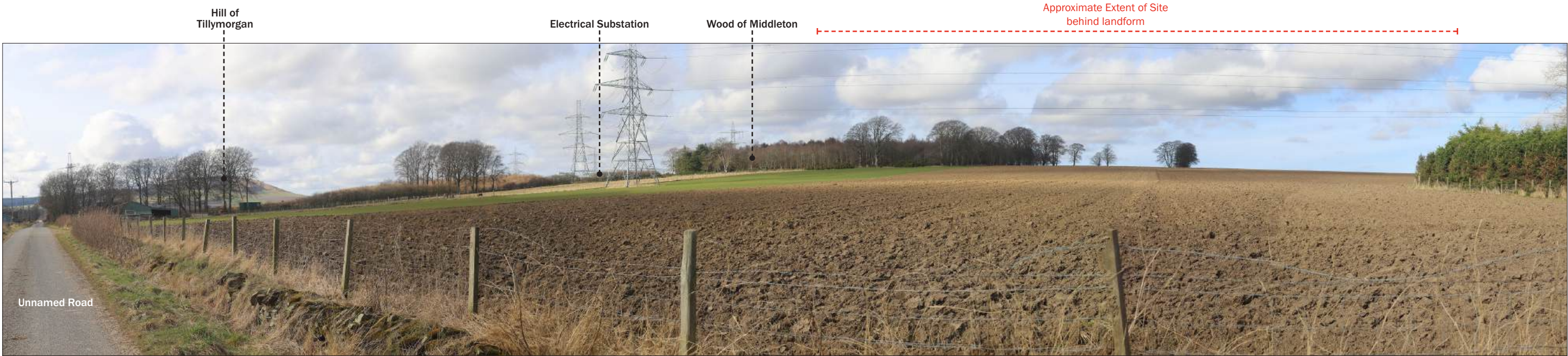


Photo Location 7: View looking north west towards the Site from unnamed road near Middleford Grange.

Visualisation Type: Type 1
Date: 07.03.2025
Time: 14:10
Looking direction: north west
Projection: Planar
Camera: Canon 6D FFS
Focal length: 50mm
Approx. HFoV: 90 degrees
Enlargement Factor: 150% @ A3

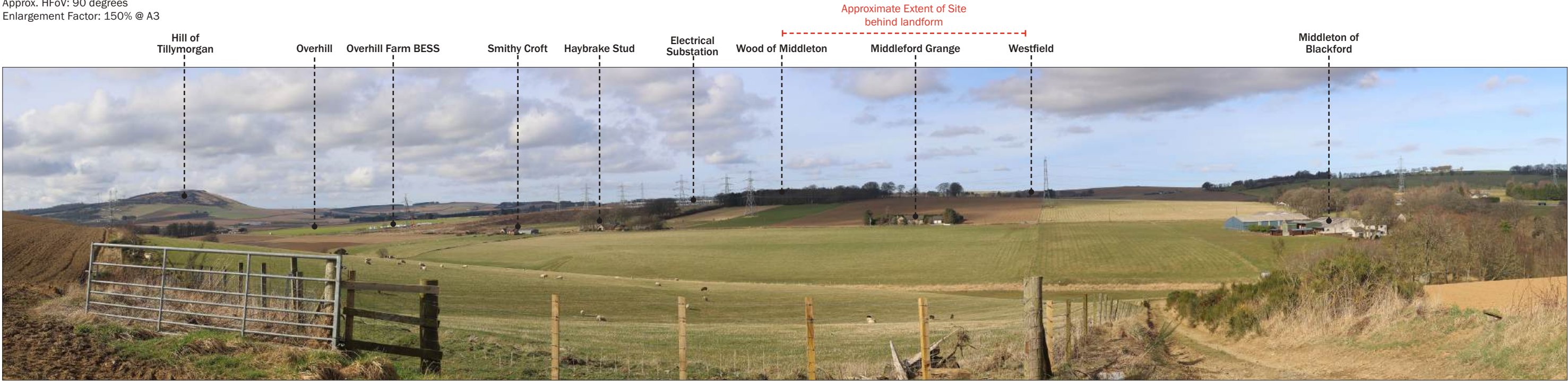


Photo Location 8: View looking north west towards the Site from unnamed road near Hill of Blackford.

Visualisation Type: Type 1
Date: 07.03.2025
Time: 14:00
Looking direction: north west
Projection: Planar
Camera: Canon 6D FFS
Focal length: 50mm
Approx. HFoV: 90 degrees
Enlargement Factor: 150% @ A3

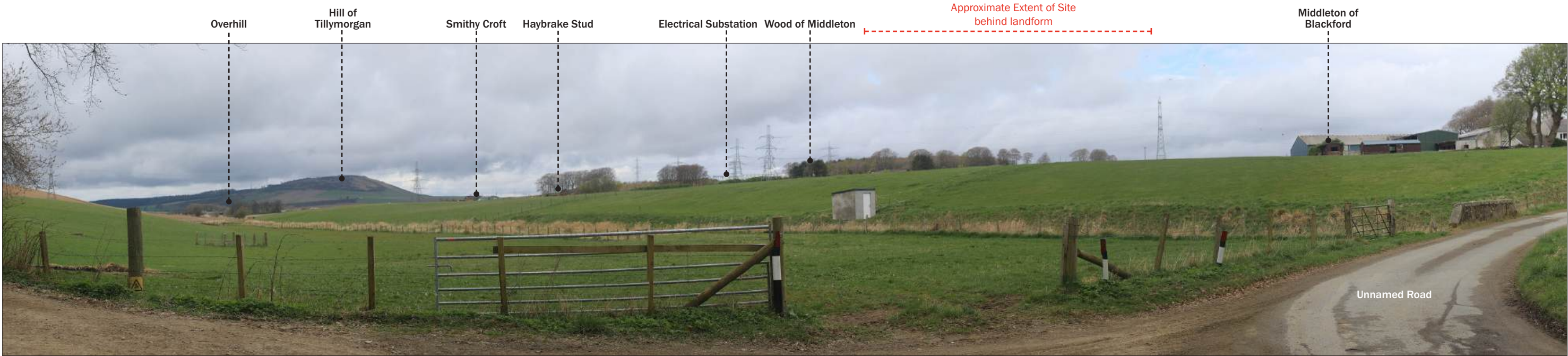


Photo Location 9: View looking north west towards the Site from unnamed road near Middleton of Blackford.

Visualisation Type: Type 1
Date: 15.04.2025
Time: 11:25
Looking direction: north west
Projection: Planar
Camera: Canon 6D FFS
Focal length: 50mm
Approx. HFoV: 90 degrees
Enlargement Factor: 150% @ A3



Photo Location 10: View looking north west towards the Site from unnamed road near Blackford.

Visualisation Type: Type 1
Date: 15.04.2025
Time: 11:33
Looking direction: north west
Projection: Planar
Camera: Canon 6D FFS
Focal length: 50mm
Approx. HFoV: 90 degrees
Enlargement Factor: 150% @ A3



Photo Location 11: View looking south west towards the Site from unnamed road near Westfield.

Visualisation Type: Type 1
Date: 15.04.2025
Time: 11:50
Looking direction: south west
Projection: Planar
Camera: Canon 6D FFS
Focal length: 50mm
Approx. HFoV: 90 degrees
Enlargement Factor: 150% @ A3

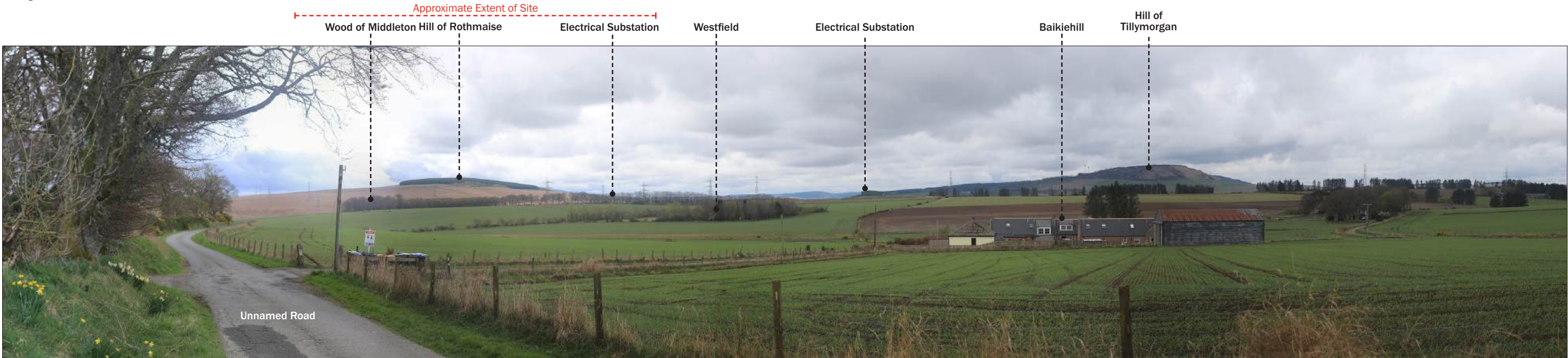


Photo Location 12: View looking south west towards the Site from unnamed road near Baikiehill.

Visualisation Type: Type 1
Date: 15.04.2025
Time: 12:00
Looking direction: south west
Projection: Planar
Camera: Canon 6D FFS
Focal length: 50mm
Approx. HFoV: 90 degrees
Enlargement Factor: 150% @ A3

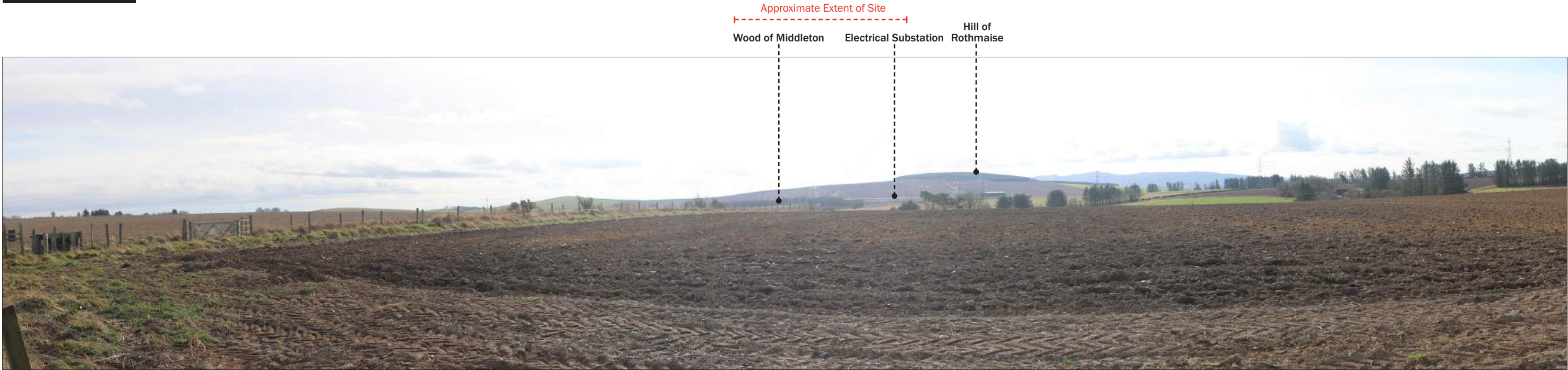


Photo Location 13: View looking south east towards the Site from B992.

Visualisation Type: Type 1
Date: 07.03.2025
Time: 13:10
Looking direction: south east
Projection: Planar
Camera: Canon 6D FFS
Focal length: 50mm
Approx. HFoV: 90 degrees
Enlargement Factor: 150% @ A3

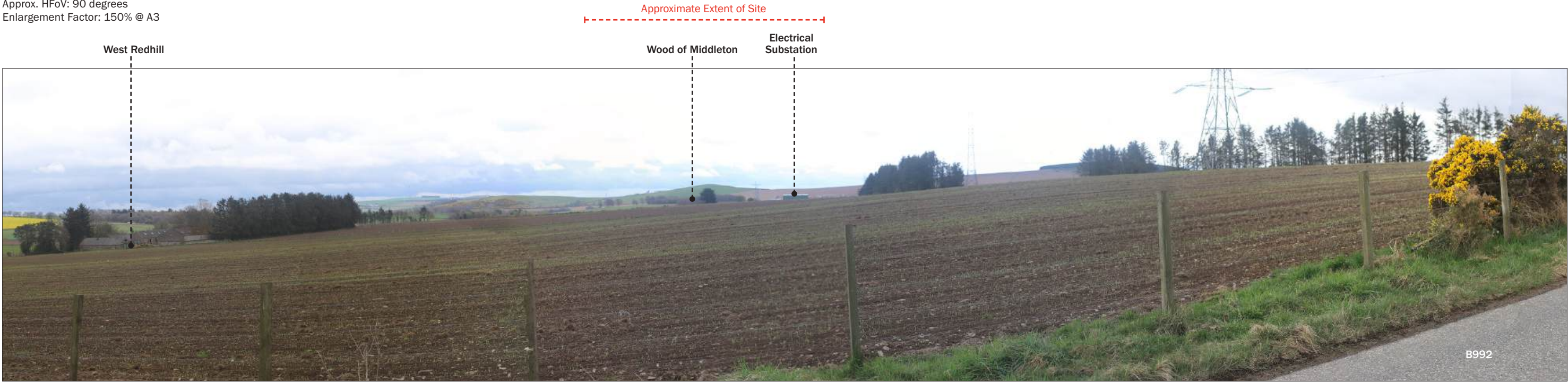


Photo Location 14: View looking south east towards the Site from B992.

Visualisation Type: Type 1
Date: 15.04.2025
Time: 12:54
Looking direction: south east
Projection: Planar
Camera: Canon 6D FFS
Focal length: 50mm
Approx. HFoV: 90 degrees
Enlargement Factor: 150% @ A3



Photo Location 15: View looking south east towards the Site from B992.

Visualisation Type: Type 1
Date: 15.04.2025
Time: 13:06
Looking direction: south east
Projection: Planar
Camera: Canon 6D FFS
Focal length: 50mm
Approx. HFoV: 90 degrees
Enlargement Factor: 150% @ A3

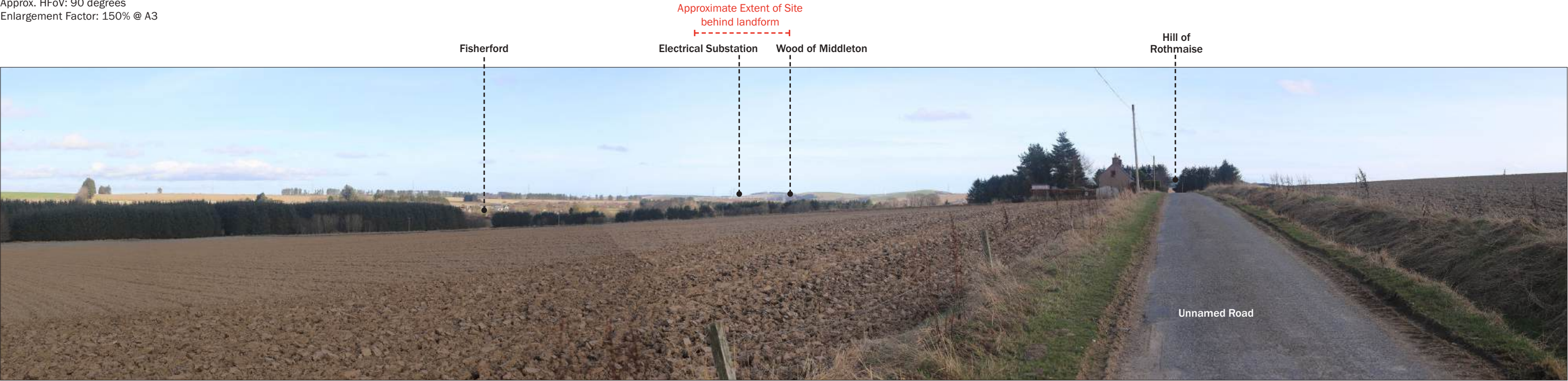


Photo Location 16: View looking east towards the Site from unnamed road near Newseat.

Visualisation Type: Type 1
Date: 07.03.2025
Time: 15:41
Looking direction: east
Projection: Planar
Camera: Canon 6D FFS
Focal length: 50mm
Approx. HFoV: 90 degrees
Enlargement Factor: 150% @ A3



Photo Location 17: View looking east towards the Site from unnamed road near Netherton.

Visualisation Type: Type 1
Date: 07.03.2025
Time: 15:57
Looking direction: east
Projection: Planar
Camera: Canon 6D FFS
Focal length: 50mm
Approx. HFoV: 90 degrees
Enlargement Factor: 150% @ A3



Photo Location 18: View looking east towards the Site from unnamed road near Newseat.

Visualisation Type: Type 1
Date: 15.04.2025
Time: 13:20
Looking direction: east
Projection: Planar
Camera: Canon 6D FFS
Focal length: 50mm
Approx. HFoV: 90 degrees
Enlargement Factor: 150% @ A3

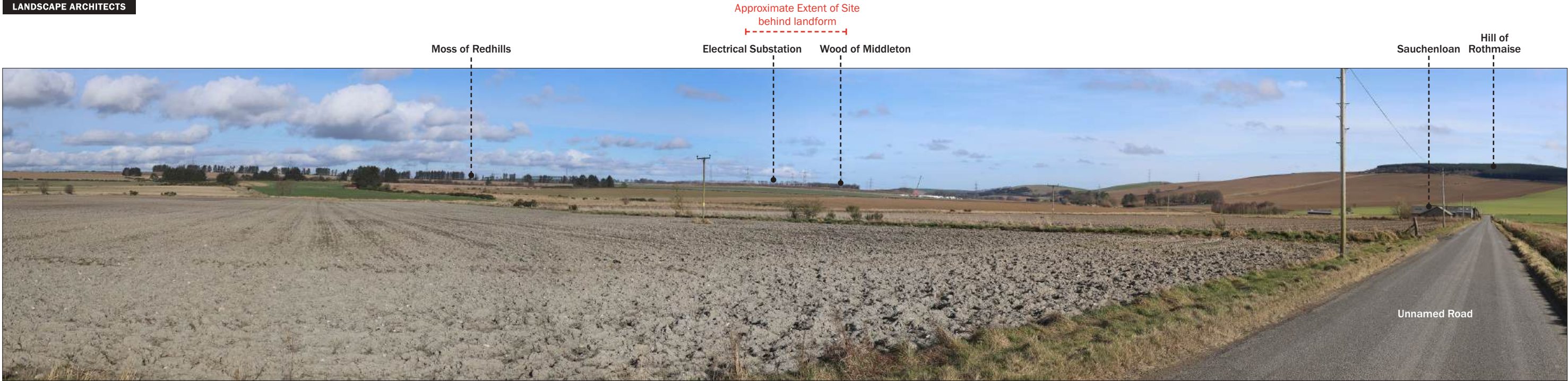


Photo Location 19: View looking north east towards the Site from unnamed road near Sauchenloan.

Visualisation Type: Type 1
Date: 07.03.2025
Time: 15:14
Looking direction: north east
Projection: Planar
Camera: Canon 6D FFS
Focal length: 50mm
Approx. HFoV: 90 degrees
Enlargement Factor: 150% @ A3

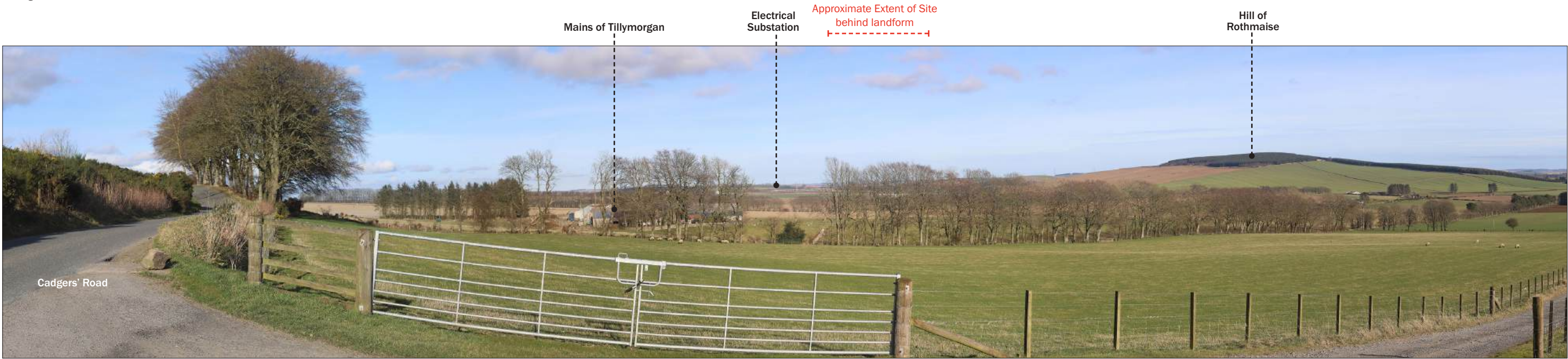


Photo Location 20: View looking north east towards the Site from Cadgers' Road.

Visualisation Type: Type 1
Date: 07.03.2025
Time: 16:03
Looking direction: north east
Projection: Planar
Camera: Canon 6D FFS
Focal length: 50mm
Approx. HFoV: 90 degrees
Enlargement Factor: 150% @ A3

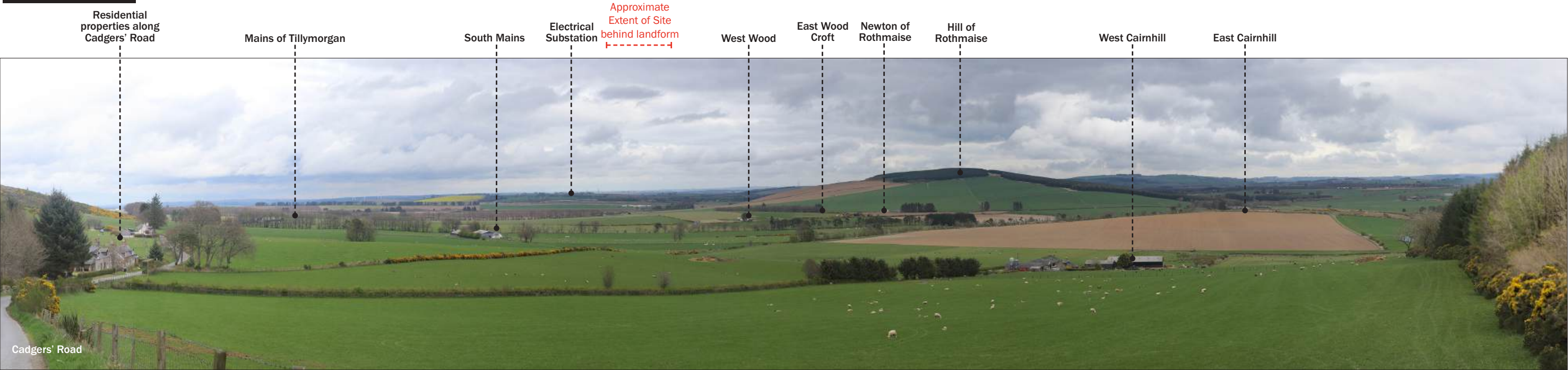


Photo Location 21: View looking north east towards the Site from Cadgers' Road.

Visualisation Type: Type 1
Date: 15.04.2025
Time: 14:41
Looking direction: north east
Projection: Planar
Camera: Canon 6D FFS
Focal length: 50mm
Approx. HFoV: 90 degrees
Enlargement Factor: 150% @ A3

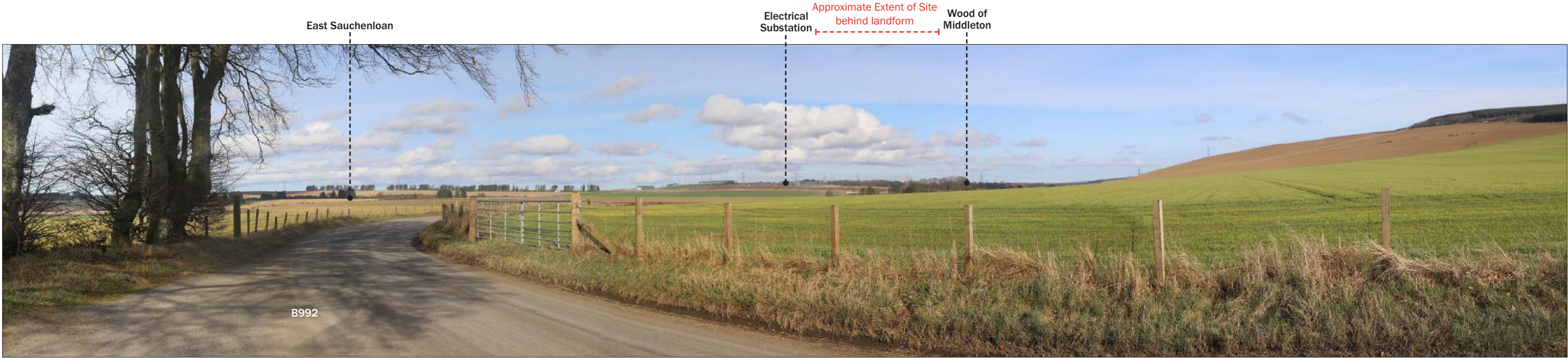


Photo Location 22: View looking north east towards the Site from B992.

Visualisation Type: Type 1
Date: 07.03.2025
Time: 15:03
Looking direction: north east
Projection: Planar
Camera: Canon 6D FFS
Focal length: 50mm
Approx. HFoV: 90 degrees
Enlargement Factor: 150% @ A3



Photo Location 23: View looking south west towards the Site from B9001.

Visualisation Type: Type 1
Date: 07.03.2025
Time: 13:00
Looking direction: south west
Projection: Planar
Camera: Canon 6D FFS
Focal length: 50mm
Approx. HFoV: 90 degrees
Enlargement Factor: 150% @ A3



Photo Location 24: View looking south west towards the Site from unnamed road near Westfield.

Visualisation Type: Type 1
Date: 15.04.2025
Time: 12:15
Looking direction: south west
Projection: Planar
Camera: Canon 6D FFS
Focal length: 50mm
Approx. HFoV: 90 degrees
Enlargement Factor: 150% @ A3

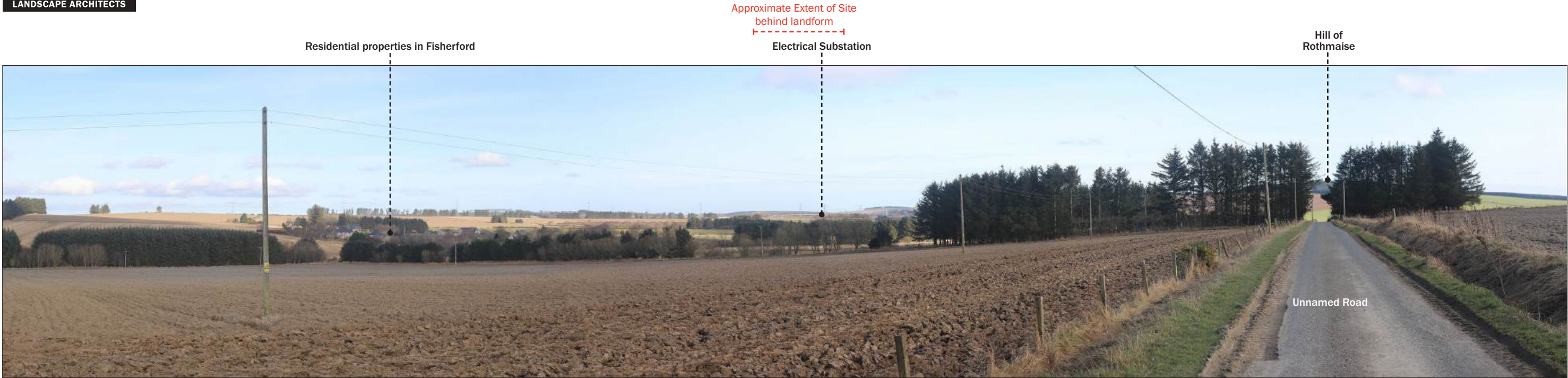


Photo Location 25: View looking east towards the Site from unnamed road near Newseat.

Visualisation Type: Type 1
Date: 07.03.2025
Time: 13:32
Looking direction: East
Projection: Planar
Camera: Canon 6D FFS
Focal length: 50mm
Approx. HFoV: 90 degrees
Enlargement Factor: 150% @ A3



Photo Location 26: View looking south east towards the Site from B992.

Visualisation Type: Type 1
Date: 07.03.2025
Time: 15:21
Looking direction: South east
Projection: Planar
Camera: Canon 6D FFS
Focal length: 50mm
Approx. HFoV: 90 degrees
Enlargement Factor: 150% @ A3

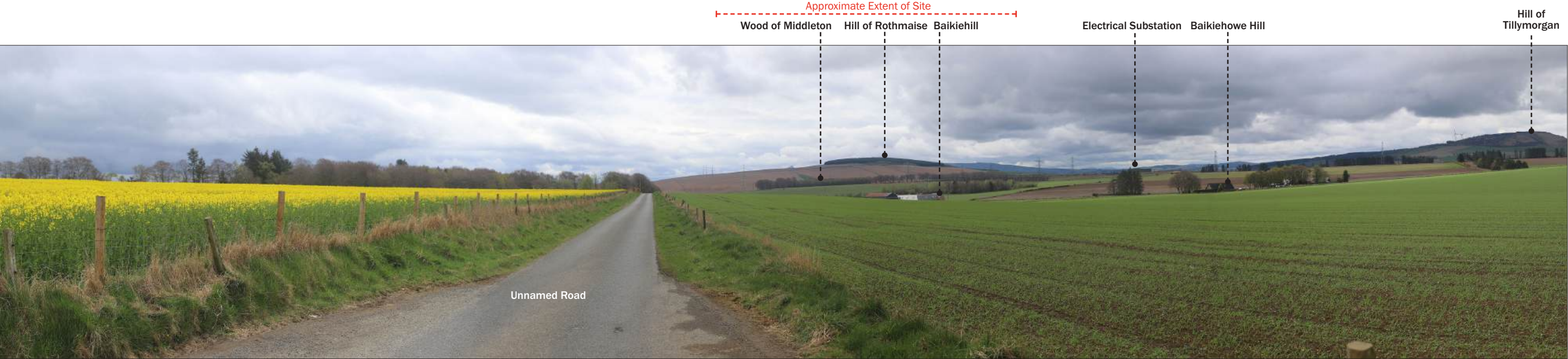


Photo Location 27: View looking south west towards the Site from unnamed road near Baikiehill.

Visualisation Type: Type 1
Date: 15.04.2025
Time: 12:24
Looking direction: south west
Projection: Planar
Camera: Canon 6D FFS
Focal length: 50mm
Approx. HFoV: 90 degrees
Enlargement Factor: 150% @ A3

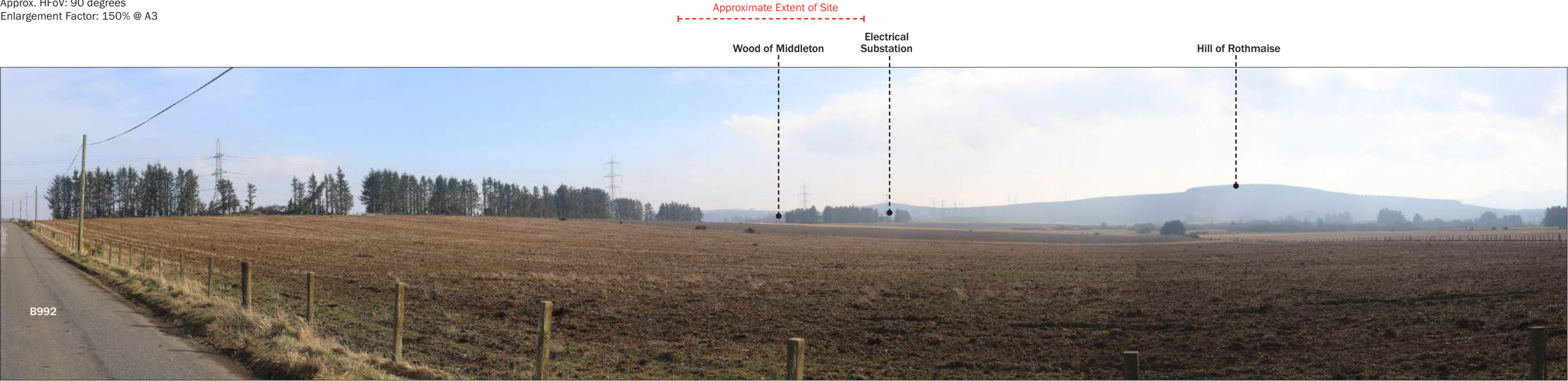


Photo Location 28: View looking south east towards the Site from B992.

Visualisation Type: Type 1
Date: 08.03.2025
Time: 13:27
Looking direction: south east
Projection: Planar
Camera: Canon 6D FFS
Focal length: 50mm
Approx. HFoV: 90 degrees
Enlargement Factor: 150% @ A3

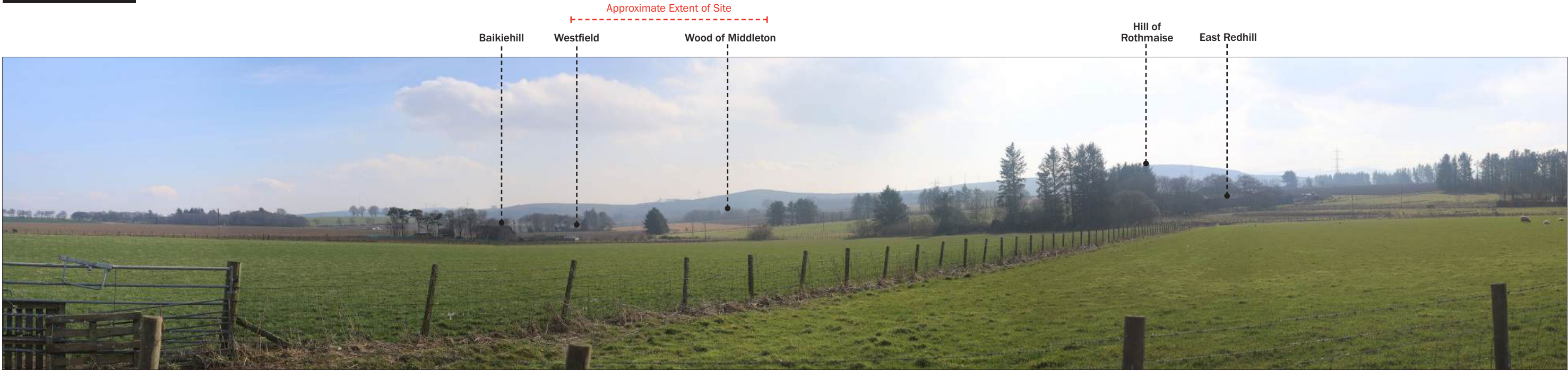


Photo Location 29: View looking south east towards the Site from B992.

Visualisation Type: Type 1
Date: 08.03.2025
Time: 13:36
Looking direction: south east
Projection: Planar
Camera: Canon 6D FFS
Focal length: 50mm
Approx. HFoV: 90 degrees
Enlargement Factor: 150% @ A3



Photo Location 30: View looking north west towards the Site from Unnamed Road near The Mill.

Visualisation Type: Type 1
Date: 08.03.2025
Time: 13:48
Looking direction: north west
Projection: Planar
Camera: Canon 6D FFS
Focal length: 50mm
Approx. HFoV: 90 degrees
Enlargement Factor: 150% @ A3

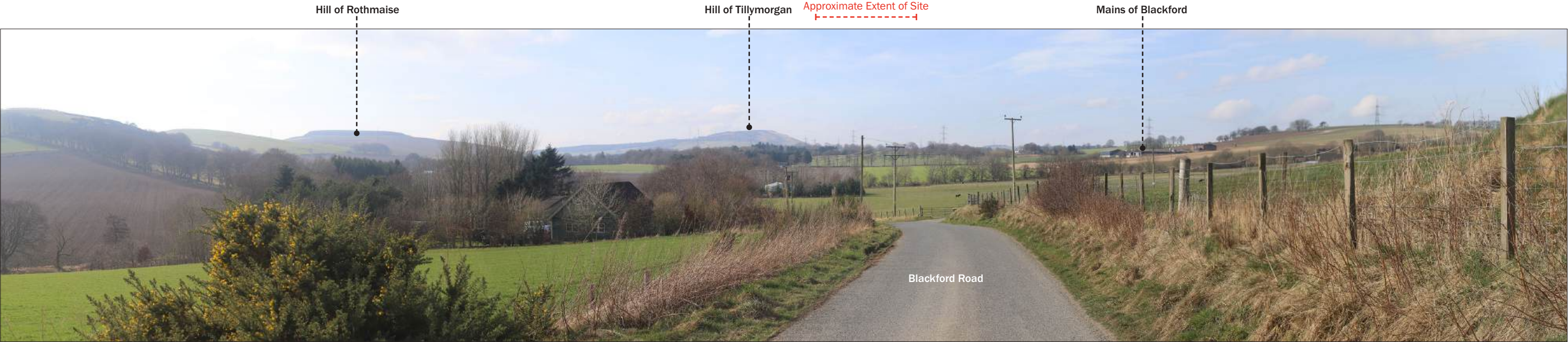


Photo Location 31: View looking west towards the Site from Blackford Road.

Visualisation Type: Type 1
Date: 08.03.2025
Time: 13:53
Looking direction: west
Projection: Planar
Camera: Canon 6D FFS
Focal length: 50mm
Approx. HFoV: 90 degrees
Enlargement Factor: 150% @ A3